



MUSEUM of EARLY
SOUTHERN DECORATIVE ARTS
WINSTON-SALEM, NORTH CAROLINA

WHO WE ARE

PROGRAMS

COLLECTION

RESEARCH

SUPPORT

Collections › MESDA Object Database › **SIDEBOARD**

SIDEBOARD

Category FURNITURE

Object Name SIDEBOARD

Maker/Artist Unknown

Place Made attributed to Tidewater Virginia

Date 1790-1800

Materials walnut __primary | |yellow pine __secondary

Dimensions [Overall Ht]37 3/4" __[Overall Width]54 1/8" __[Overall Depth]21 7/8"

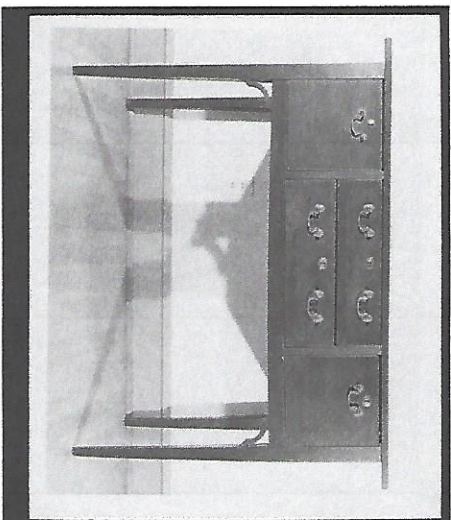
Description four square, tapering legs, front ones bracketed; two stacked drawers center flanked by cock beaded cellaret drawers.

Object Location private collection

Photo Number S-5030

File Location VT-11-5

History

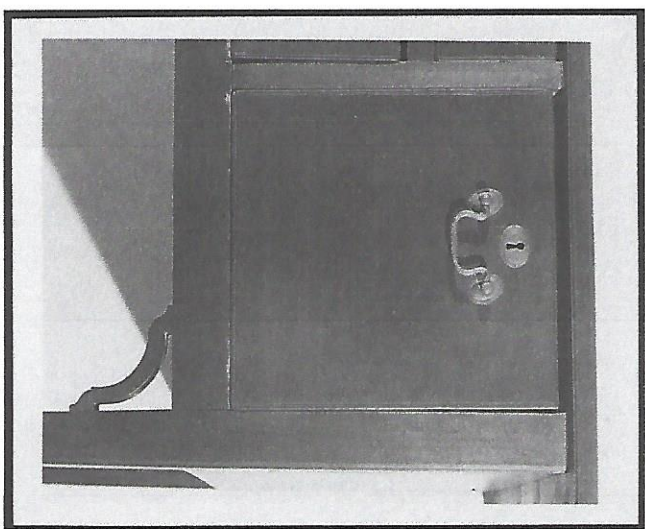


Descended from the Cook family of "Church Hill," near Ware Church, Gloucester county, Virginia.

Alterations-Condition fine, original brasses

Hardware bail with rosette ___ ___ oval key hole escutcheons

Examined Frank L. Horton -Bradford L. Rauschenberg -Ann W. Dibble __Yes __Yes __10/02/1975



Museum of Early Southern Decorative Arts

924 South Main Street, Winston-Salem, NC 27101
336-721-7360






Part of Old Salem Museums & Gardens

- About
- Mission
- History
- MESDA Advisory Board

- Press
- MESDA in the News
- Rights & Permissions
- Media Inquiries

Connect

Sign up for Email Updates

- Visit
- Hands-On History for Middle and High School Students
- Access Salem Directions

- Support
- Friends of MESDA
- Frank L. Horton Society
- Frank L. Horton Fellowship Fund
- MESDA Annual Fund
- Object Gifts
- Planned Giving

Select Language

Powered by 

Translate

- Contact
- Staff Directory
- Email
- Address & Phone